

Cancer Care

Metabolic Interventions

&

Repurposed
Medications

Christine Drivdahl-Smith

March 3, 2024



Disclaimers

- I have no conflict of interest; I am not being paid by any organization or product.
- I am not giving any specific medical advice; I am here to impart knowledge and provide you with resources.





Cancer Care and the System

The “System” has been captured

- The regulatory bodies, like the CDC, FDA, USDA
- The Medical Schools, and research projects
- The Journals and medical literature
- The Legacy Media
- Social Media



Example of Big Pharma Capture of FDA



You are not a horse. You are not a cow. Seriously, y'all. Stop it.



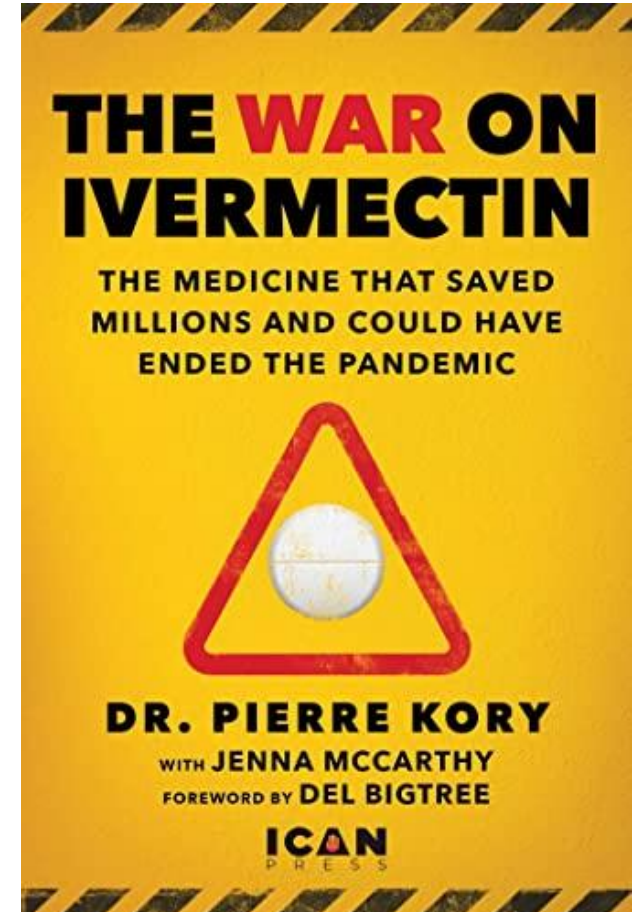
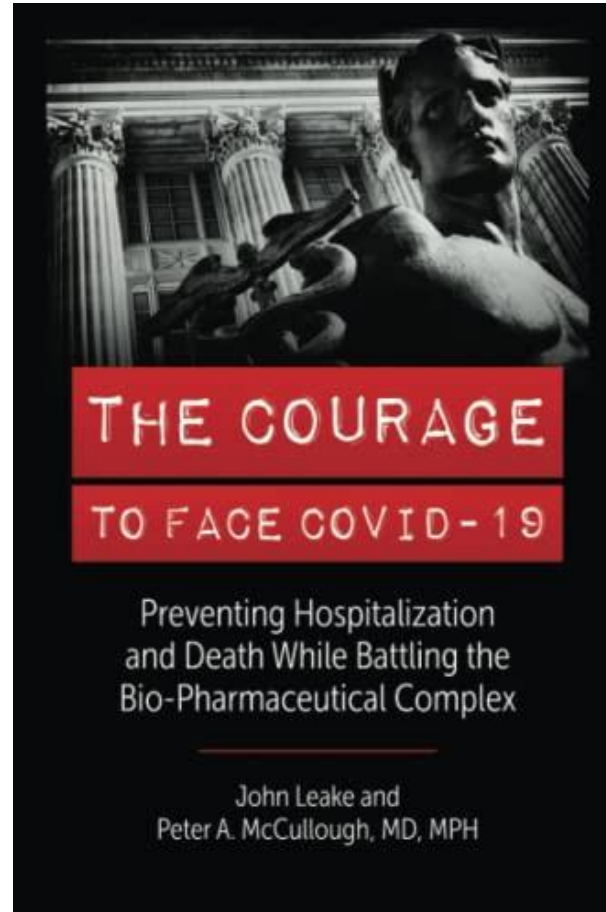
Why You Should Not Use Ivermectin to Treat or Prevent COVID-19
Using the Drug ivermectin to treat COVID-19 can be dangerous and even lethal. The FDA has not approved the drug for that purpose.
[fda.gov](https://www.fda.gov)

11:57 PM · Aug 21, 2021

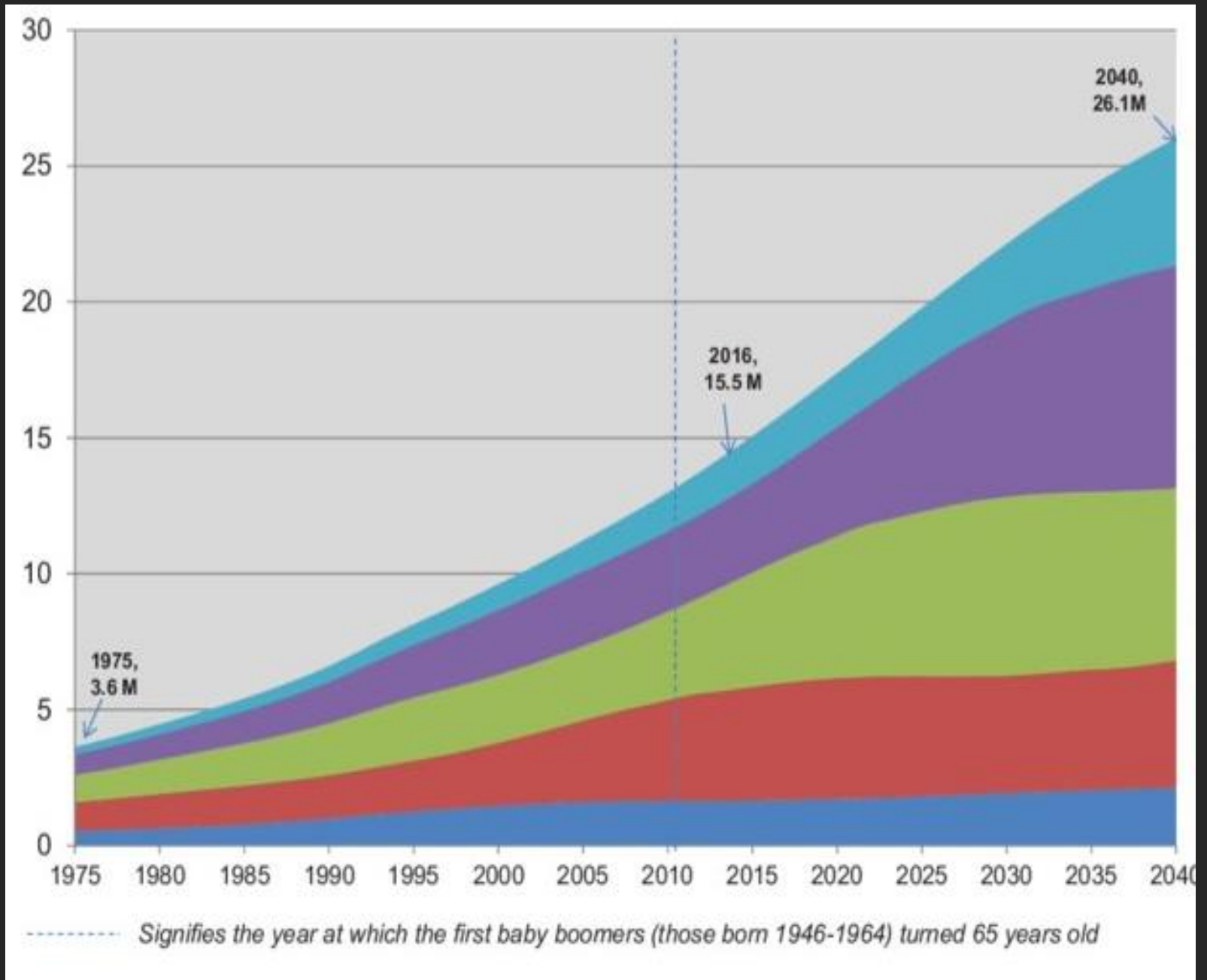


Shout Out

Good reads that shine a light on the past 4 years.

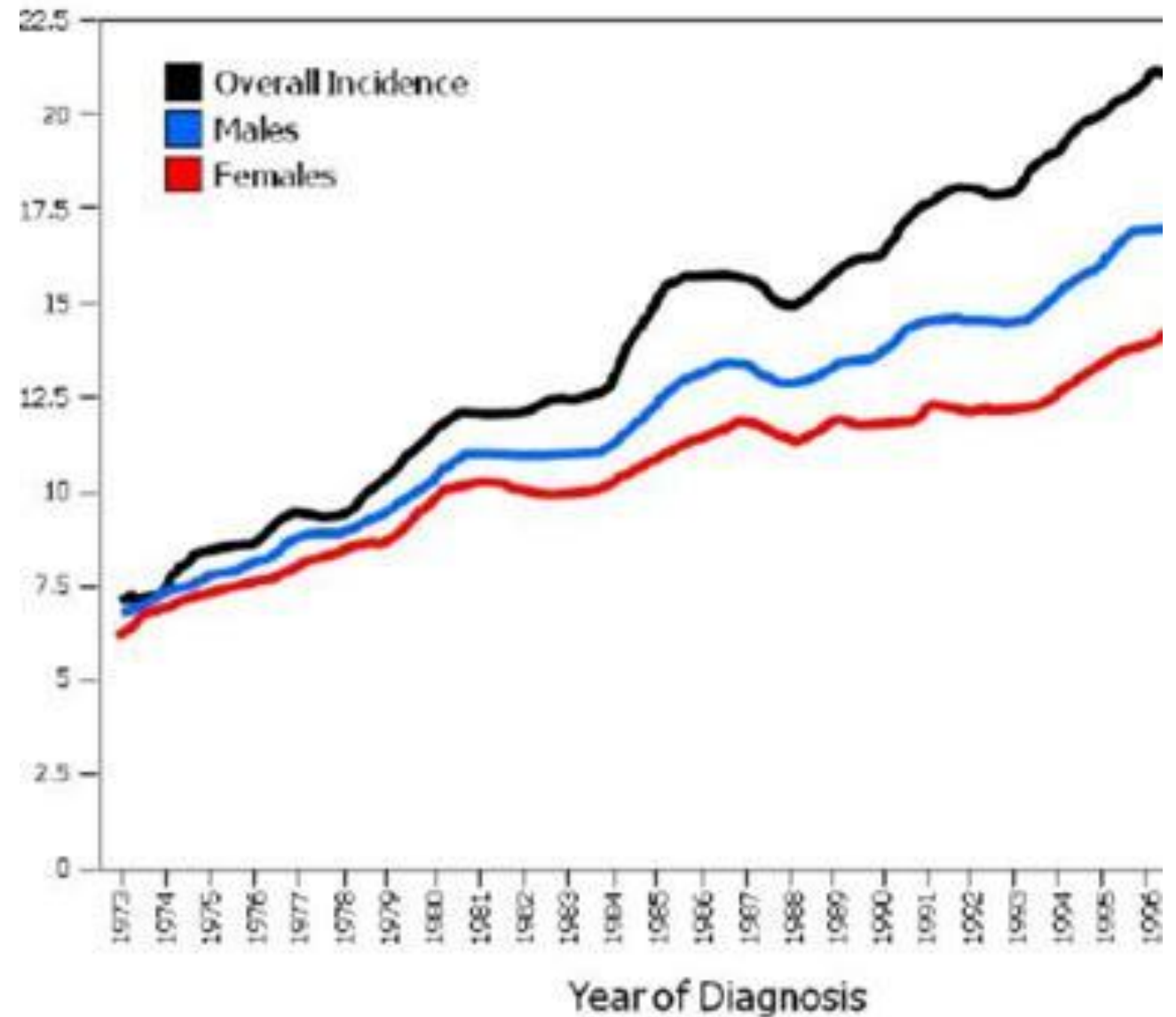


Cancer Incidence



Cancer Incidence

- Incidence of cancer is continually rising.
- Since the rollout of the C-19 shots, there has been an even greater increase of some types of cancer.
- We are seeing “Turbo Cancer”



Turbo Cancers

Described by Dr. Ryan Cole, Dr. William Makis, and Dr. Harvey Risch since the job rollout

Young people in 20's and 30's

Late-stage presentation

Aggressive and rapid growth and spread

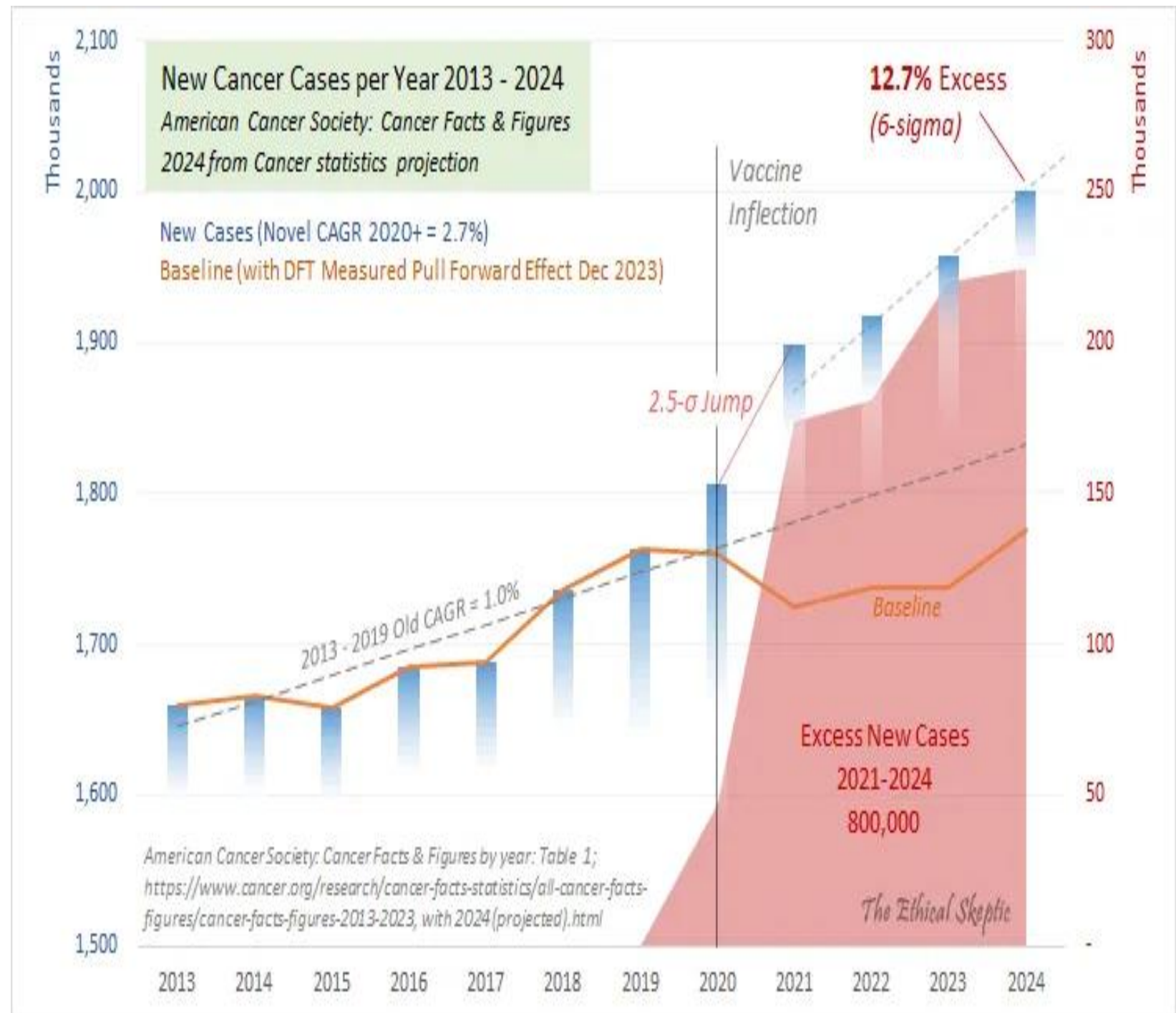
Resistant to usual treatments

Sudden and aggressive recurrence of a cancer that has been in remission for years



Cancer Excess

- 800,000 Excess New Cases from 2021-2024
- This year 2 million people in U.S. will be diagnosed with cancer
- DMED shows 200% increase in cancer diagnosis among military

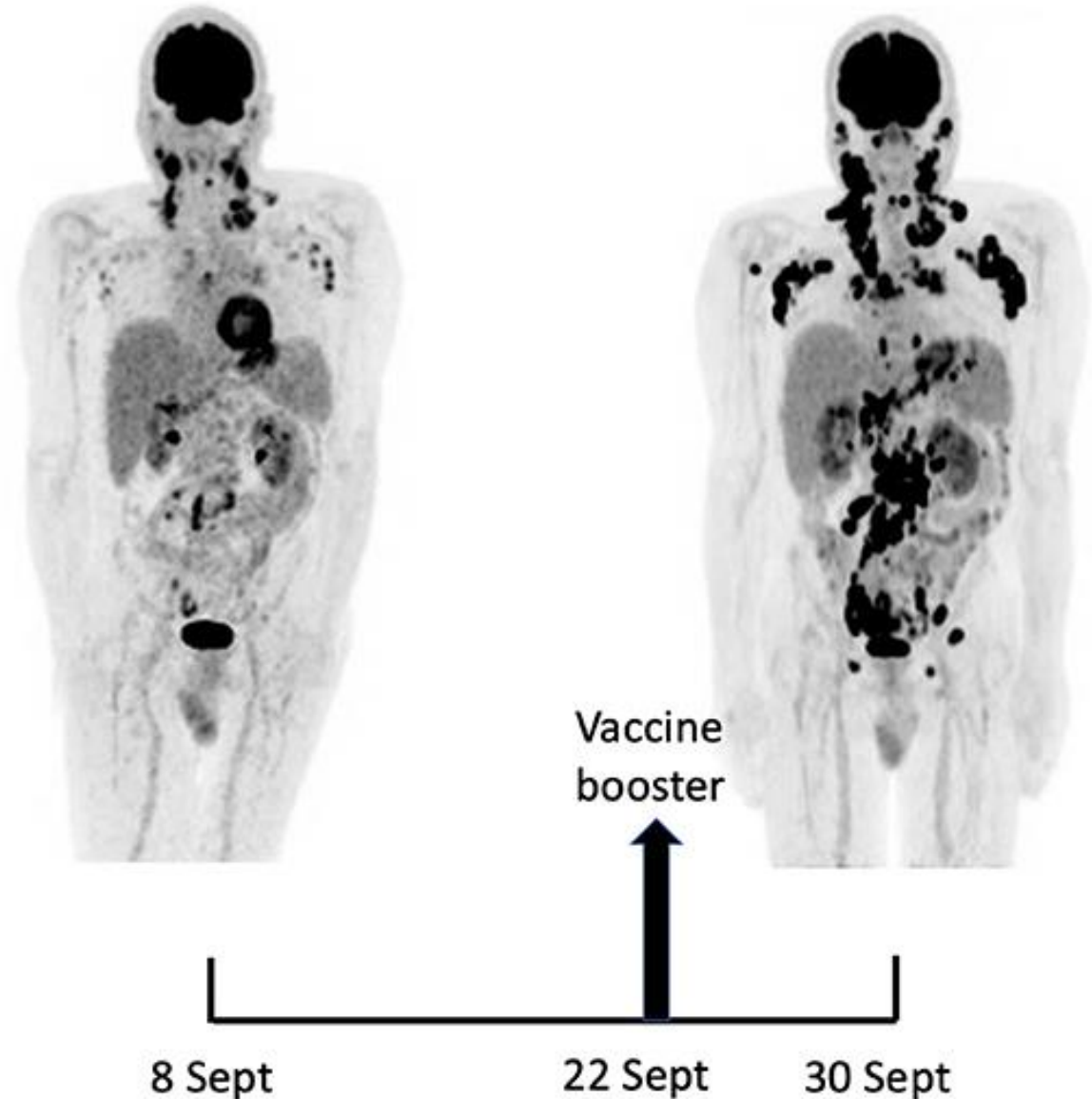


Rapid progression of cancer after booster

Case report of 66- year-
old man with Lymphoma

Front. Med., 25
November 2021. Sec.
Pathology. Volume 8 -
2021

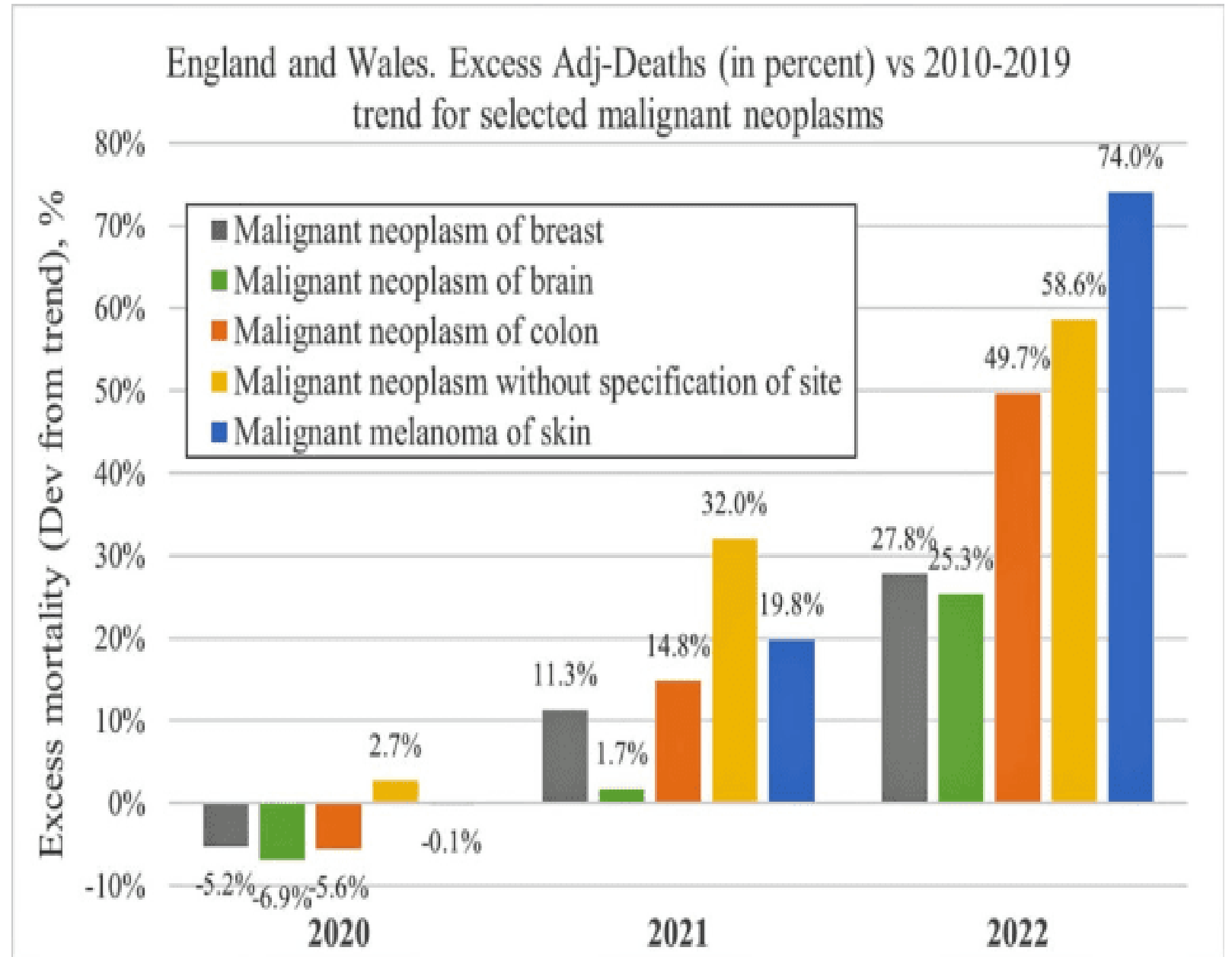
<https://doi.org/10.3389/fmed.2021.798095>



Excess Cancer Deaths

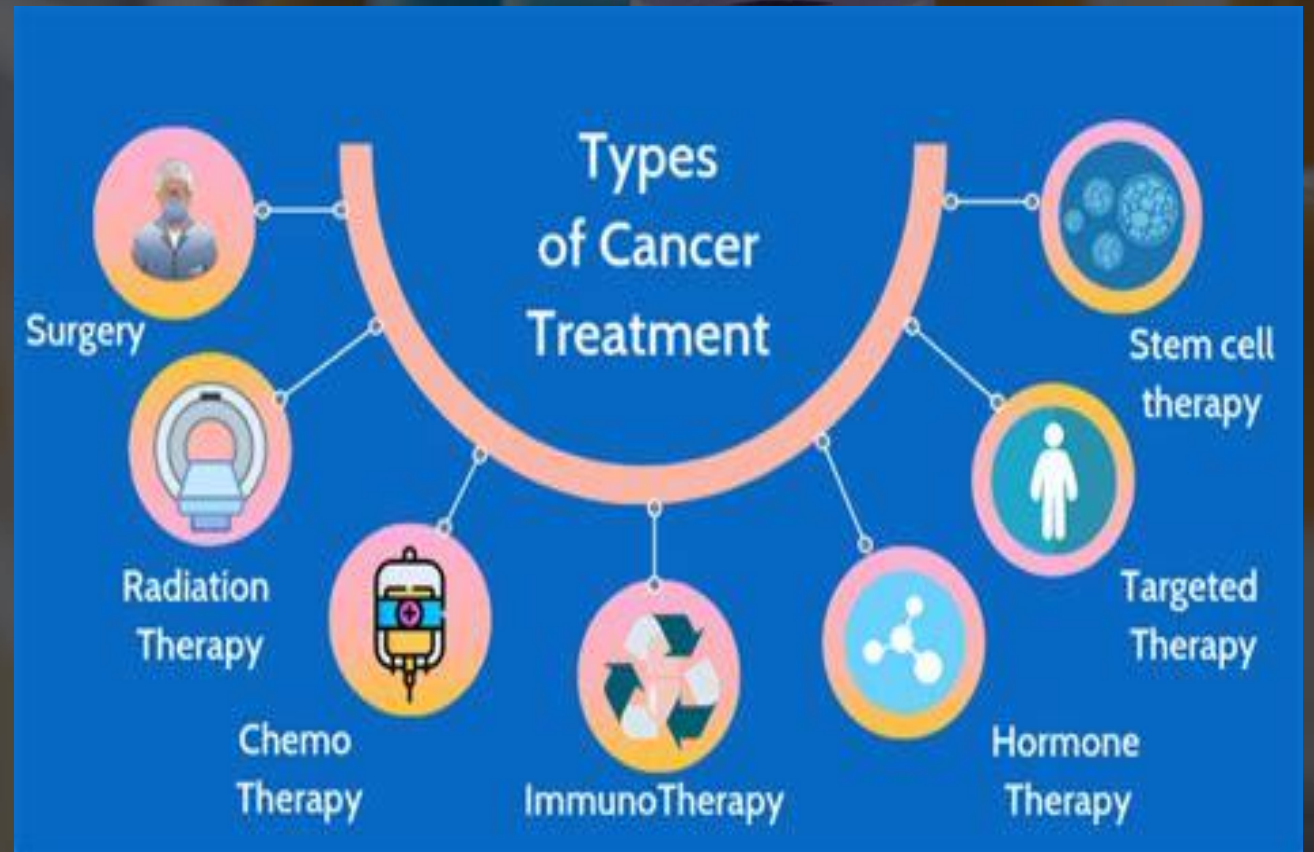
UK's Office for National Statistics

The Explosive Link Between Covid Vaccines and Increased Cancer Rate in Children and Young Adults. The Expose. Feb 11, 2024



Traditional Cancer Treatment

- Includes surgery, chemotherapy, radiation, and immunotherapy
- Patients fear the treatment as much as the cancer diagnosis
- Expensive!!



Cancer is Big Business

Currently \$200 Billion annually

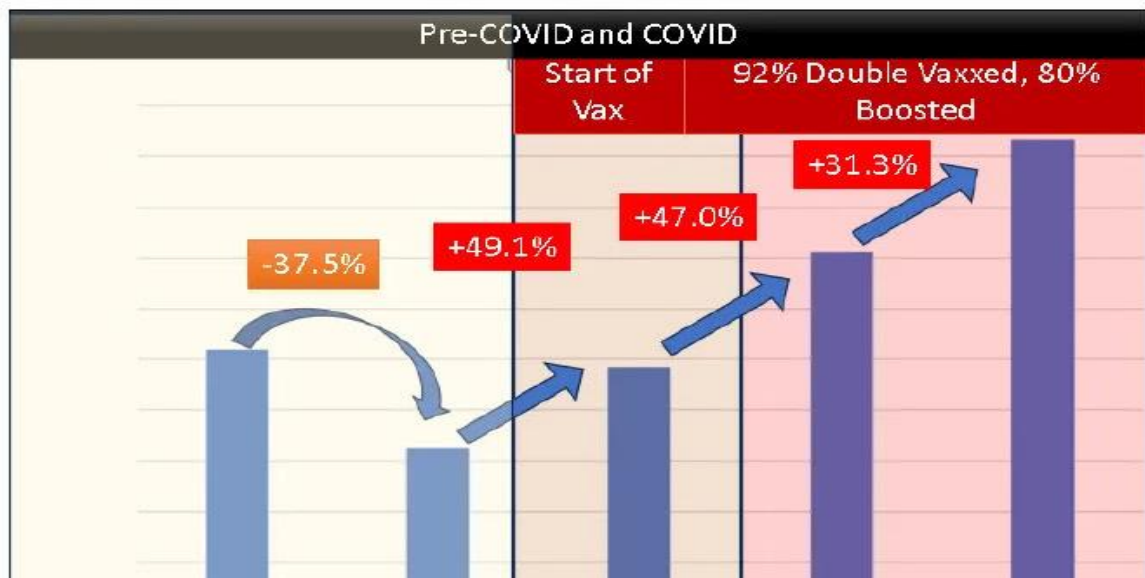
Big Pharma is positioning to rollout “new and improved” therapies

J&J acquired Ambrx Biopharm for \$2 billion because it specializes in new area of cancer treatment: antibody-drug conjugates

Pfizer spent \$43 billion to acquire Seagen

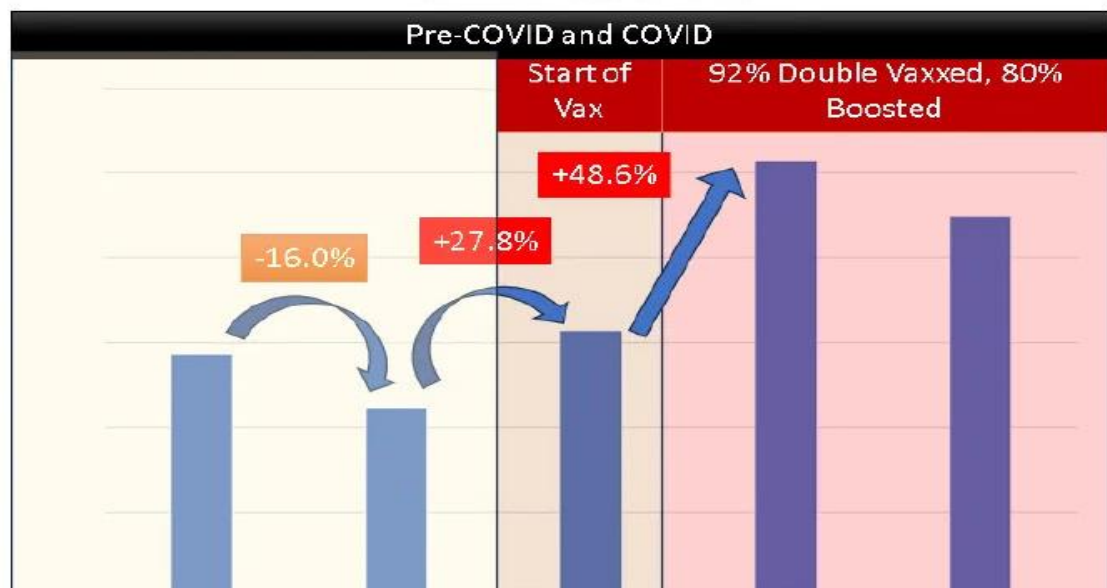


Oxaliplatin



NATIONAL SALES DATA – Singapore 2019 - 2023

DOCETAXEL



Increase in
Cancer Drug
Use

Example of costs of one round of chemotherapy

Oxaliplatin \$1665

Given with 5-Fluorouracil
\$933

And with Leucovorin \$474

Given every 2 weeks for
multiple rounds.

Indirect costs of travel,
lodging, treatment of side
effects, lab testing, etc



123 Cancer Centers opening/ expanding in 2023-2024

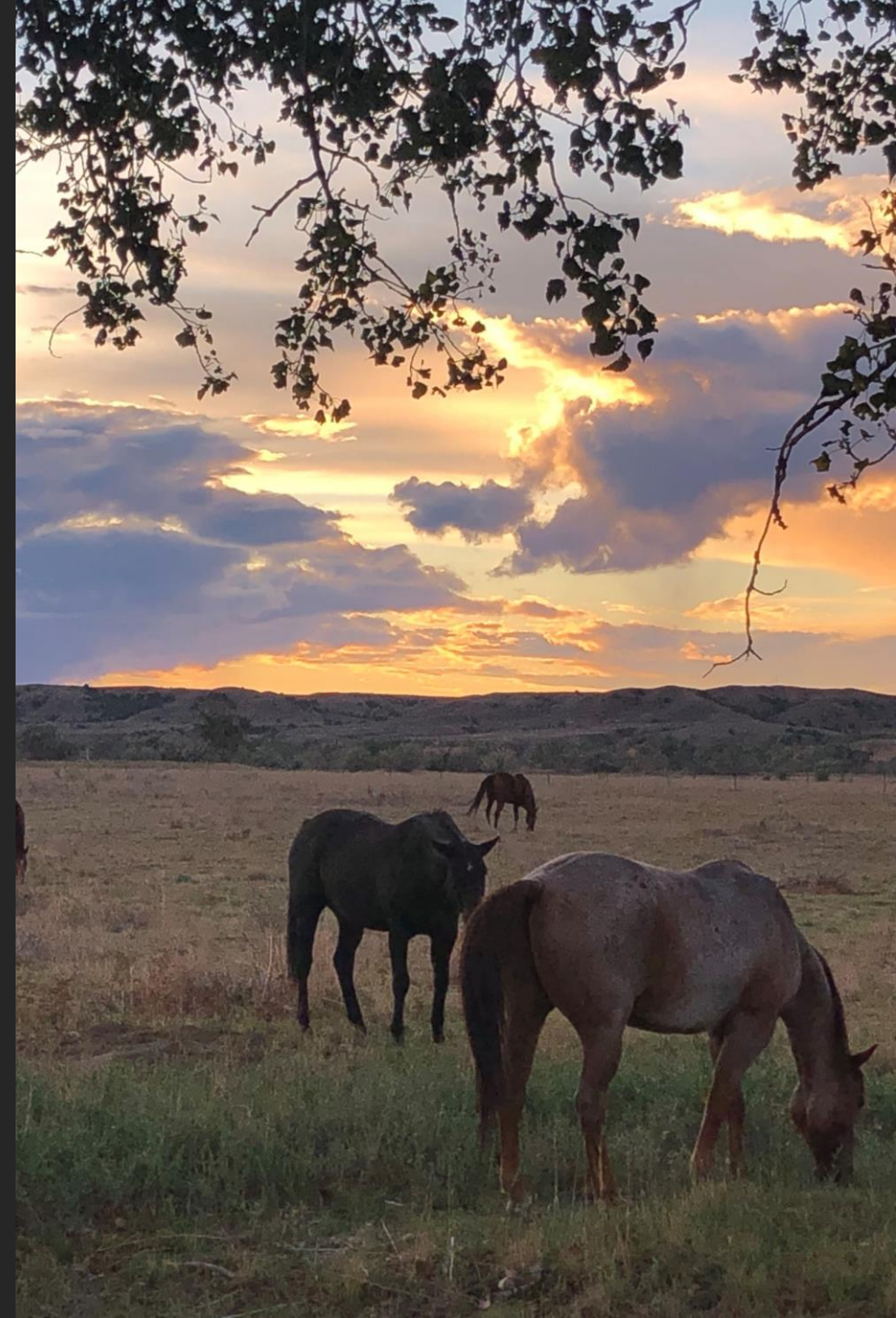
Holy Rosary's state of the art \$17 million Cancer Care Center

Lewistown's Central MT Med Center \$15.6 million Cancer Center

Bozeman Health opening a new oncology tower at Deaconess Regional Medical Center

Sidney Health Center \$7 million expansion for radiation therapy

Sanford Health opened \$200 million Cancer Care Center in Bismarck, ND





Cancer Care

“Patients need to be enlightened, they need to be empowered, they need to be informed, and they need to have a discussion with their physician.” Dr. Paul Marik

Cancer/ Medical Care Today

- Find a doctor who is trained in Functional/ Integrative Oncology or is part of your care team.
- Find a primary care provider who will listen and is willing to learn.
- Advocate for yourself and have a family member or friend who can advocate on your behalf.

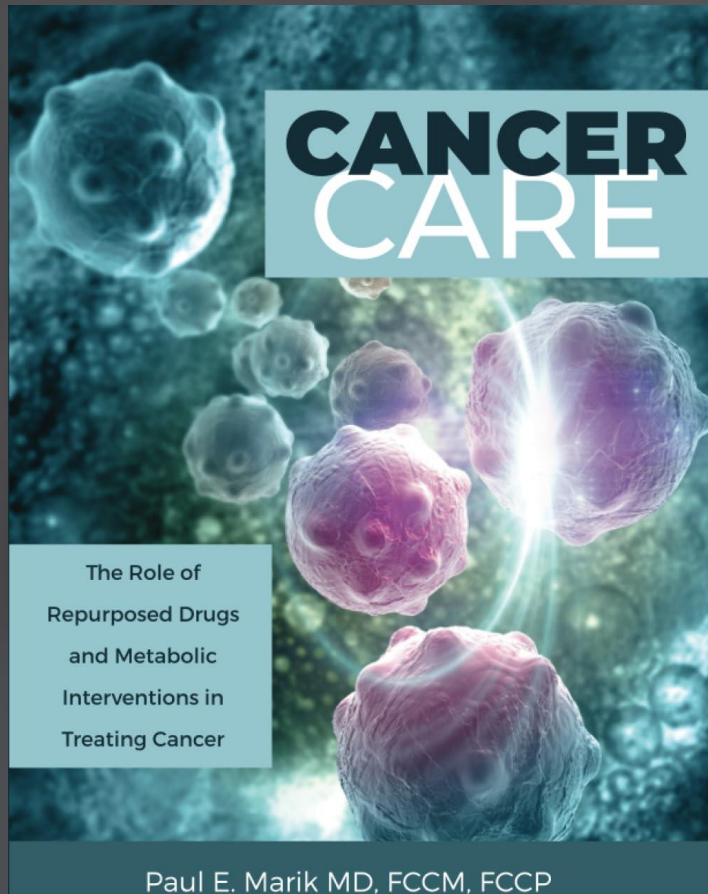


You must become the expert!

- TURN OFF THE TV!!
- YOU ARE THE CAPTAIN
- ALWAYS HAVE AN
ADVOCATE (FIRST MATE)
PRESENT
- INFORMED CONSENT
- SECOND OPINION
- DO YOUR OWN
RESEARCH



Excellent Resource



Monograph PDF:

<https://covid19criticalcare.com/reviews-and-monographs/cancer-care/>

Available as soft-cover book on Amazon

Cancer Care

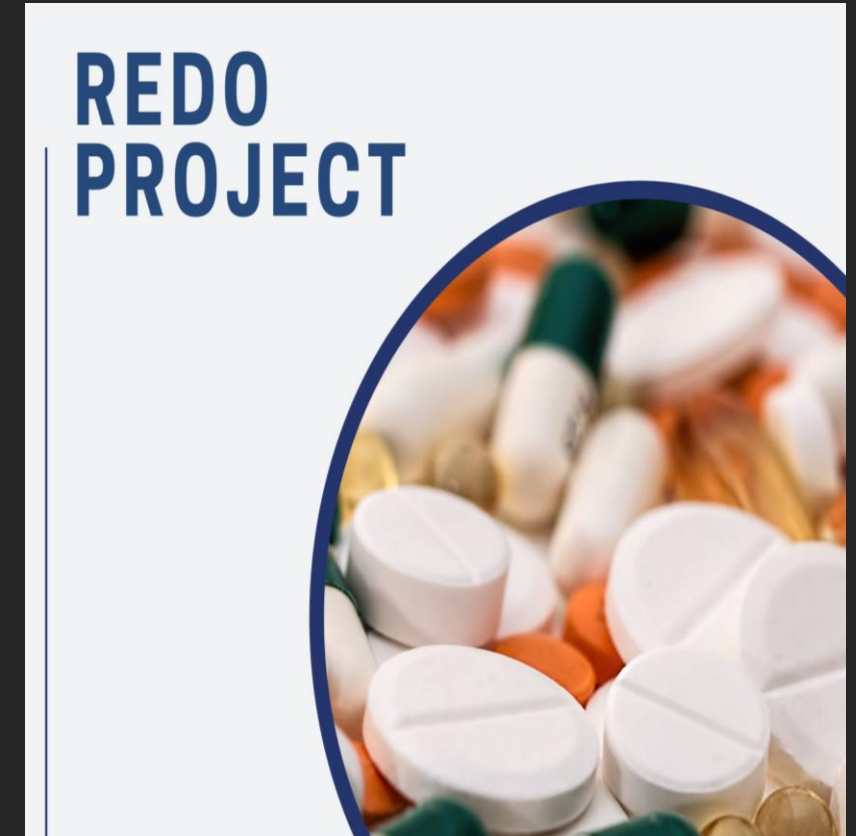
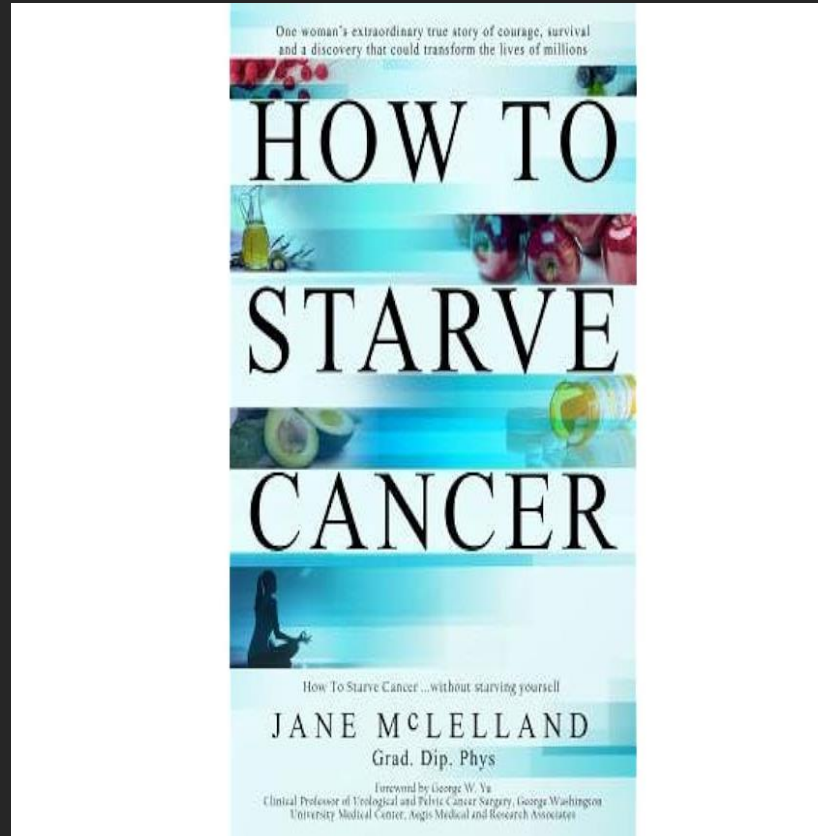
Living document which will be updated.

To find current CANCER CARE monograph:

- Go to FLCCC.net
- Select “Resources”, then select “Professional Resources”
- Select “Medical Evidence”
- Under “Reviews & Monographs,” find CANCER CARE

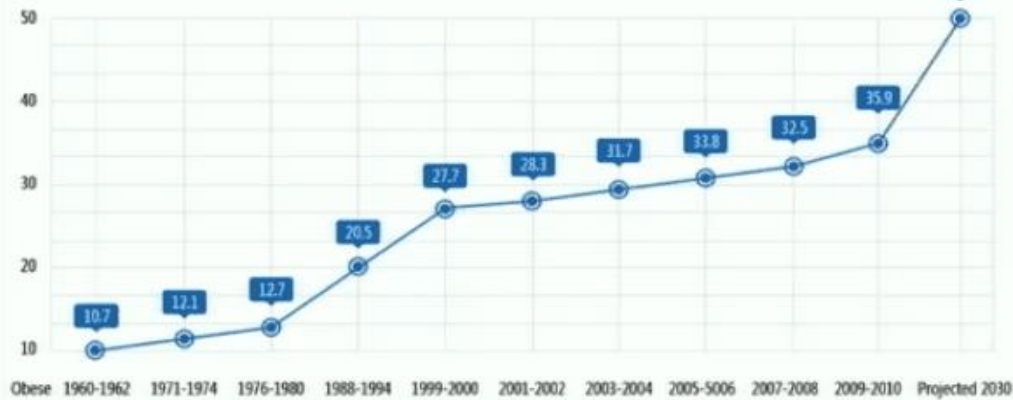
Resources for Dr. Marik's Book

- After extensive research, he took the top 20 most promising medications
- The published book has 892 references
- FLCCC Monograph is a “living” document, and is updated routinely as more information is available/ published



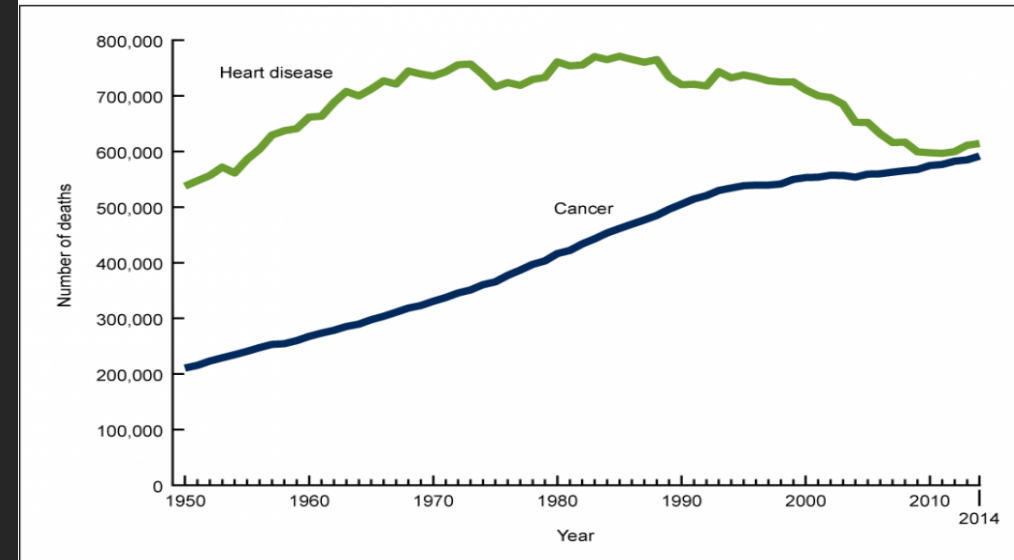
Cancer is a Metabolic Disease

Prevalence of Obesity Among U.S. Adults Aged 20-74

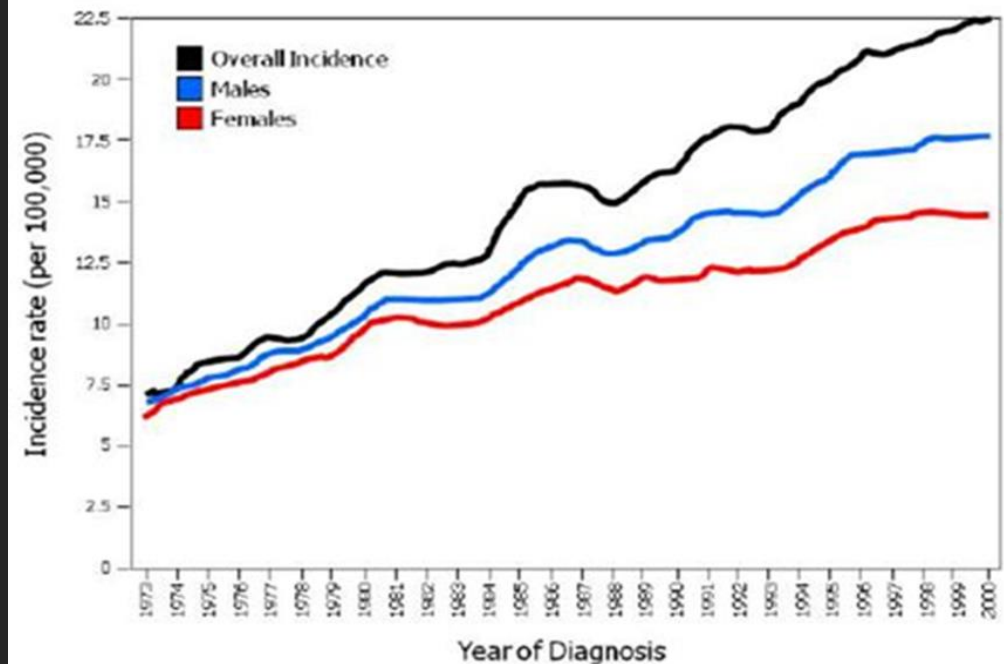


Derived from NHANES data (http://www.cdc.gov/nchs/data/hestat/obesity_adult_09_10/obesity_adult_09_10.html#table1)

Figure 1. Number of deaths due to heart disease and cancer: United States, 1950–2014



NOTES: Leading cause is based on number of deaths. Access data table for Figure 1 at: http://www.cdc.gov/nchs/data/databriefs/db254_table.pdf#1. SOURCE: NCHS, National Vital Statistics System, Mortality.

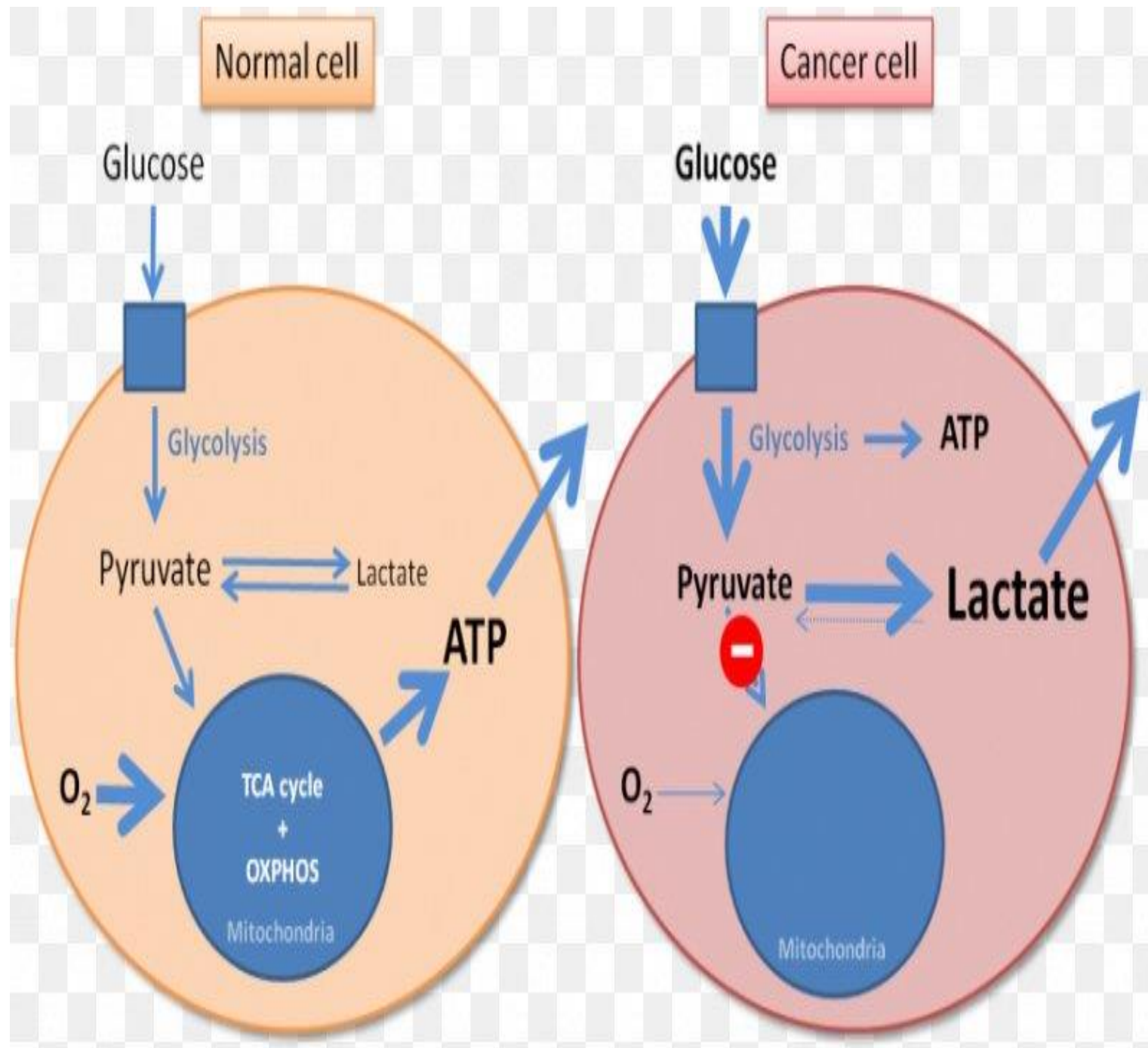


Cancer is a Metabolic Disease

The mitochondria is the powerhouse of the cell.

The mitochondria of cancer cells gradually change from normal energy production of oxidative phosphorylation to fermentation.

Cancer cells required glucose for metabolism, whereas healthy cells can use fatty acids and proteins to make energy.



Metabolic Interventions

- Ketogenic diet: one that is high in fats and protein, and low in carbohydrates.
- Glycemic Control
- Restore a normal microbiome in gut.
- Time-restricted eating



Ketogenic Diet

- High in saturated fats, like butter
- Omega-9 monosaturated fatty acids, like olive oil and avocado oil
- Medium chain fatty acids, like coconut oil
- Omega-3 fatty acids like flaxseed oil



Fasting Mimicking Diet

Researched and designed by Dr.
Valter Longo, USC Longevity Inst.

Low calorie vegan diet for 5
days one time/ month

Induces multiple anti-cancer
pathways

Ongoing studies in Breast Cancer
patients, but looks like improved
outcomes

Go to Prolonfast.com for
information



Glucose management

- Fasting or baseline blood sugar of 50-80.
- 2-hour PP blood sugar <120: eat foods with low glycemic index.
- Go for 20 min walk after eating starchy foods and drink a glass of water with 1 tbs of apple cider vinegar.



Restore normal gut microbiome

- Eat a diverse range of foods.
- Eat lots of veggies, legumes, and beans.
- Eat fermented food like yogurt, kefir, apple cider vinegar, pickles, sauerkraut.
- Eat dark fruits and take supplemental Resveratrol.



Restore normal gut microbiome

- Eat prebiotic fiber like chicory root, Jerusalem artichoke, garlic, onions, leeks.
- Exercise regularly, spend time outdoors, and get enough sleep.
- Reduce stress.

Chi-Chan Lee, et al. Unraveling the connections between gut microbiota, stress, and quality of life for holistic care in newly diagnosed breast cancer patients. *Scientific Reports*. Oct 2023.

<https://www.nature.com/articles/s41598-023-45123-1>



Repurposed Drugs

- Used as an adjunctive to traditional cancer care.
- Almost ALL have multiple modes of action.
- ReDO project has cataloged 268 approved drugs with anticancer effects.
- Consider taking multiple meds which act synergistically.

'So, do you ever go down any rabbit holes?'

Me:



Vitamin D

- Many people in the Northern US are deficient.
- Target for a level of 55-99
- Use Vit D3 with K2
- May need to take bolus dose of 50,000 units for 2 days, then continue with 10-20,000 units daily
- Also add Magnesium (glycinate or threonate) 200-500 mg daily.



Melatonin

- Natural molecule secreted by the pineal gland and regulates the sleep cycle, a potent antioxidant, critical role in healthy mitochondrial function
- Has anti-cancer properties; night shift workers have a higher incidence of breast and other cancer
- Multiple mechanisms and active against multiple cancers
- Start with 1 mg at night and gradually increase to 20-30 mg. Use slow-release product to decrease chance of crazy dreams



Curcumin (Turmeric)

- Multiple anticancer pathways; also anti-inflammatory, antimicrobial, antiviral properties
- Usually formulated with a lipophilic carrier and piperine (component of pepper) to increase absorption. Also take it with milk or fatty snack
- Take 2-6 grams per day



Mebendazole

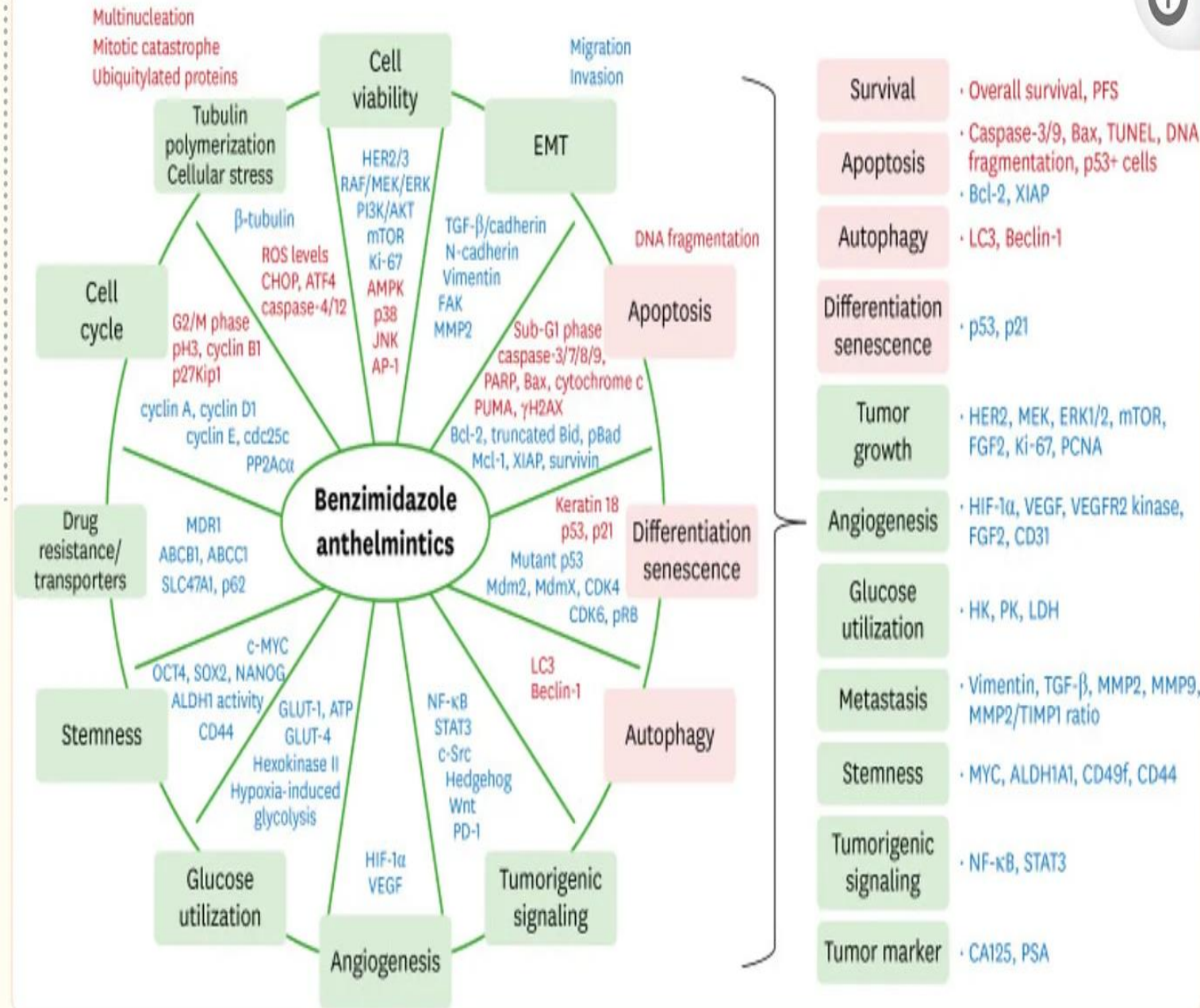
Fenbendazole

Albendazole

- Originally developed as antiparasitic
- Has powerful anticancer properties, including fatally disrupting the cellular microtubule formation in cancer cells
- Multiple other pathways
- Able to cross the blood-brain barrier, so can slow the growth of gliomas (brain cancer)
- Also, beneficial for multiple other cancers



Mechanism of action for Fenbendazole



Mebendazole

- Mebendazole is the human form of this medication
- It is very expensive: \$555 per 100 mg tab
- Recommended dosing is 100-200 mg per day
- Available from international (India) compounding pharmacies for \$0.27 per 100 mg tab (All Day Chemist)
- <https://www.alldaychemist.com/order-online>
- May be available from U.S. compounding pharmacies



Fenbendazole

- The pet/ animal version of medication
- Available OTC, and known as Panacur, and Safe-Guard
- Made popular by the story of Joe Tippens: The Tippens Protocol - Fenbendazole 222 mg per day, in conjunction with Curcumin and CBD oil



Omega-3 Fatty Acids

- Anticancer properties for multiple cancers
- Also improves tolerability of chemo and radiation
- Also improves cachexia
- Dose is 2-4 grams daily with food
- Use with caution with anti-coagulants



Metformin

- Prescription medicine used to treat Diabetes
- Anticancer effects, both directly on cancer cells, and indirectly by lowering patients blood glucose and inflammation
- Lower cancer incidence, lower cancer mortality, improve cancer response to chemo and radiation
- Effective against multiple cancers, but most effective with colorectal and prostate
- Dose is usually 1000 mg twice a day. Recommend adding a B complex vitamin. Be careful adding berberine.



Metformin

- Originally derived from a plant *Galega officinalis*, known as french lilac or goat's rue
- It was used in medieval times to treat parasites and symptoms of diabetes (increased thirst and urination)
- In 1918, the compound guanidine was isolated and found to have anti-diabetes effects
- In 1922, a biguanide was developed—one being Metformin—to treat Diabetes
- In the 1940s it was used as an antimalaria drug, and today we know that it is useful to treat Covid!



Berberine

- Natural compound found in plants; mother nature's Metformin, and it can lower blood sugar, cholesterol, and blood pressure.
- Multiple anticancer mechanisms including reducing growth of cancer cells, preventing mets, inducing apoptosis, activating autophagy
- Berberine also influences the gut microbiome to improve good bacteria
- Increases radiation sensitivity, and enhances other chemotherapy effects
- Monitor blood sugar if using with Metformin, or alternate Metformin and berberine monthly



ECGC (Green Tea Catechin)

- Multiple anti-cancer mechanisms
- Synergistic with other phytochemicals like resveratrol
- Decrease metastasis risk by altering the tumor microenvironment
- Effective against multiple cancer types
- Green Tea catechins 500-1000 mg/ day with meals



Low Dose Naltrexone

- Naltrexone in doses of 50-100 mg blocks opiate receptors and is used for opioid and alcohol addiction treatment
- In very low doses, such as 1-4.5 mg, it has powerful anti-inflammatory and anticancer effects, again in multiple pathways
- Prescription filled at compounding pharmacy with maintenance dose of 2-4.5 mg daily
- Opioids to treat cancer pain may activate cancer pathways



Ivermectin (AKA Horse Dewormer)

- Ivermectin is a molecule derived from bacterium (*Streptomyces*) discovered in soil on a golf course in Japan by microbiologist Satoshi Omura
- Found to have anti-parasitic effects and was developed along with veterinarian scientist Wm. C. Campbell as a pharmaceutical to treat animals and later human parasites.
- Approved for human medication in 1978, and Omura and Campbell won the Nobel Prize in Physiology and Medicine in 2015.
- It also has anti-viral effects and has been used to treat Sars CoV 1, and CoV2 (Covid 19), MERS, Ebola, HIV, Zika virus, West Nile Virus

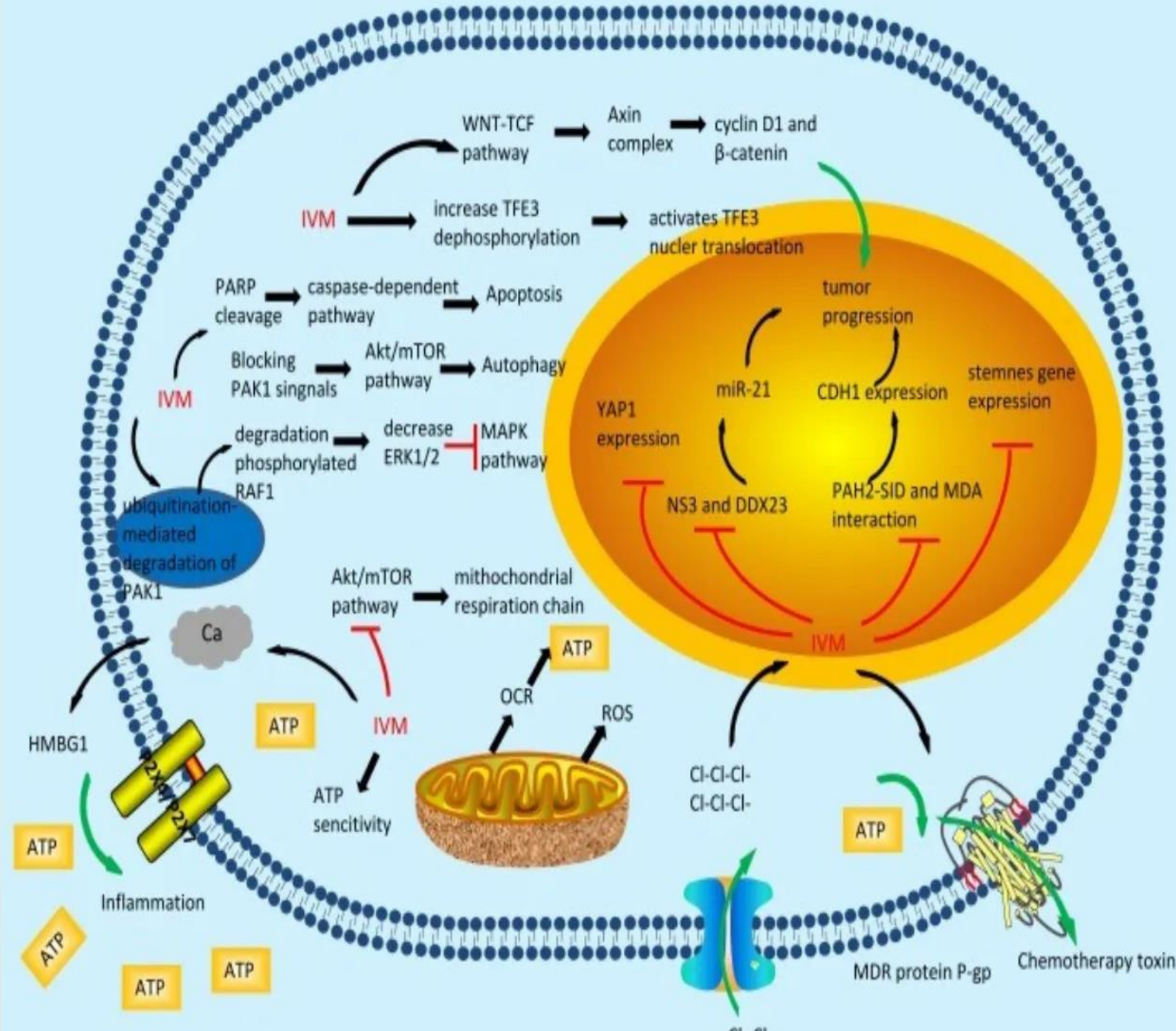


Ivermectin “Miracle Drug”

- Ivermectin has anticancer properties via multiple pathways (at least 15!)
- It is effective against most cancers but does not cross the blood brain barrier.
- Dose varies, but probably 12-18 mg daily. It has been dosed as high as 1mg/ kg without problems.
- Compounding pharmacies dispense capsule at requested dose, usually \$3-5 per capsule.



Mechanisms of Action for Ivermectin



Multiple other options

- Atorvastatin, Simvastatin
- Disulfiram
- Cimetadine
- Mistletoe
- Phosphodiesterase 5 inhibitors, like Viagra
- Doxycycline
- Resveratrol
- Aspirin and Diclofenac



Drugs and supplements NOT recommended

- Shark Cartilage
- Laetril (Amygdalin, sometimes called Vitamin B17)
- Antioxidant supplements Vit A, C, E, Coenzyme Q10, NAC should not be used if receiving chemo or radiation (which primarily work by oxidizing the cancer cells)
- Conversely, High Dose IV Vit C (50-75 grams) generates reactive oxygen species and potentiates the effects of chemo & rad



FLCCC Observation Study

Dr. Paul Marik and Dr. Kathleen Ruddy announced intention to enroll cancer patients in an observational study using metabolic interventions and repurposed medications.

Patient Paul Mann was diagnosed with widely metastatic prostate cancer and was successfully treated with Ivermectin and other repurposed meds by Dr. Ruddy.



Paul Mann, Patient 0

“Dr. Ruddy mentioned that some studies showed ivermectin might be beneficial in fighting cancer, she said I had nothing to lose, so I might as well try it. And 18 months later, I'm still here. I'm functioning. I go to work, I go dancing a couple of times a week, and it seems things are on the upswing.”

-Paul Mann



For information on the study

<https://covid19criticalcare.com/cancer-study/>

Or

Go to [FLCCC.net](https://flccc.net)

Select Resources, then select
Patient Resources, then
select Cancer Study





In Closing...

I wish for you that happiness be at your door. May it knock early, stay late and leave the gift of God's peace, joy and good health behind.



Fritz's Story...